



Newsletter

INSIDE THIS ISSUE

- Clerk’s Corner.....1
- Chairman..... 2
- Emergency Mgmt.....2
- Roads..... 4
- Erin Park..... 4
- Tax Dollars 5
- Erin Hills 5
- Erin School..... 6
- Schauer Arts 9
- Library..... 10
- St. Patrick’s CH..... 11
- Soccer 12
- Baseball 12
- Parade..... 12
- Humane Society 13
- Holy Hill..... 14
- St. Paul’s CH..... 15
- Veterans..... 15

NEWS AND REPORTS

Clerk’s Corner by Julie Kriewaldt, Town Clerk

We have four elections this year.

There is a primary election Feb. 15 for the Hartford Union High School Board and the Hartford Jt. 1 School Board. On the ballot for HUHS are six candidates for two positions: incumbents Tina Pridemore and Craig Westphal and challengers Heather Barrie, Nolan Jackett, Jonathon Lobert and Don Pridemore. On the ballot for Jt. 1 are three candidates for one position: incumbent Andrew Hughes and challengers Tristan James Johannes and Louise Schrunk.

On April 5, voters will elect two supervisors to the Erin Town Board. On the ballot are incumbents Maripat Blankenheim and Jeff Millikin and challengers Eric Casetta and Michael Stapleton. Additionally, the top four HUHS candidates and top two Jt 1 candidates from the primary will also be on the April 5 ballot.

The remaining election dates are Aug. 9 and Nov. 8.

Voters can check their voter registration status or request an absentee ballot online at MyVoteWI. Register by mail or MyVoteWI until the third Wednesday before an election (must be postmarked). After that time, registration is required in the clerk’s office until 5 p.m. on the Friday before an election or on election day.

MyVoteWI also allows a voter, once registered, to request an absentee ballot. If the clerk does not have a copy of the photo ID on record, it will prompt the voter to attach a copy. Voters can also request an absentee ballot by email (please use clerk@Erin.WI.gov) or mail. It must be in writing. Voters cannot request an absentee ballot for someone else. When requesting an absentee ballot, include voter’s name, the address where the voter is registered in Erin, the address to mail the ballot and the election(s).

Permanent overseas voters, military voters or temporary overseas voters may receive a ballot by email or fax.

Absentee ballots must be mailed or returned to the clerk on or before the election day. Please allow enough time (three days if local and at least one week if out -of-state) for the clerk to receive your ballot. The state of Wisconsin does not allow ballots to be emailed or faxed.

(Continued on page 2)

REPORTS

(Continued from page 1)

Photo ID is required for voting.

Dog licenses due March 31

All dogs 5 months and older must be licensed annually by March 31. The application is on the town website under Forms. To license your dog(s), complete one application per dog, pay the license fee (check or cash), include the rabies certificate (this is returned to the owner) and a stamped, self-addressed envelope. There is a **\$5 late fee** if the dog is not licensed by March 31. This does not apply to puppies too young to license or if you acquire a dog later in the year.

Tax receipts

Instructions for printing your tax receipt from the Washington County website:

- Go to <https://www.washcowisco.gov>
- On the left side of the main page, click on Taxes/**Assessment information**. This will take you to the Washington County Ascent Land Records site
- Choose the municipality by clicking on the drop-down and pick T3-TOWN OF ERIN
- You can search by last name, street number or parcel ID
- Once you find your parcel, click on the **red parcel number** and it will take you to your parcel information screen
- Choose the Select Detail Taxes
- Click on the correct tax year
- A small box will open, click on **Printer Friendly**
- The next screen will open from which you can print the receipt

Chairman's Update by Dennis Kenealy

As we welcome the new year, I hope you and your families enjoyed a happy and healthy holiday season.

We're starting the year with good news. The town is in the final stages of a lease agreement with Washington County to place an emergency telecommunications tower in our pit off Hwy. 83. The county board approved a resolution authorizing the county to enter into a lease with the town, paving the way for the tower to be constructed at the pit pending ongoing environmental studies of the site.

The winter months present their share of challenges for all of us, including managing snow and ice on the roads to ensure residents and visitors can travel safely through Erin. Our road crew, with the help of part-time plow truck drivers, works around the clock to keep town roads clean and safe. But they need your help.

Please remember to keep the roadway in front of your house clear for snowplows, including parked cars, garbage cans or

anything else that inhibits the drivers from clearing your road. Trees and fences in the road right-of-way can also pose problems for snowplow drivers.

Most importantly, if you have to be on the roads during inclement weather, maintain a safe distance between your vehicle and snowplows. State law requires drivers to stay at least 200 feet behind a plow clearing ice or snow or laying salt or sand on a highway with a speed limit more than 35 miles per hour. Drivers should stay at least 75 feet back from a plow on a road with a slower speed limit.

Working together, we can limit some of winter's inconveniences. Our snowplow drivers will greatly appreciate your help... as much as we appreciate them during these challenging months.

Emergency Management/Law

Enforcement by
Bradley Bautz, Director



As I write this article, the town has not declared a Snow Emergency this winter. Just a reminder, if the town chairman or I declare one, no vehicles can be parked on or along any town-maintained roads. This is done during larger snowfalls.

As a matter of practice, during any snow event, please do not park on or along the roadway-state, county, or town. There have been some instances of parked vehicles interfering with snow removal. If a vehicle goes in the ditch, it should be removed immediately. It also must be removed by a licensed towing service for the safety of all.

A Snow Emergency does NOT allow for snowmobiles, ATVs, UTVs or any other vehicles to use the roadways. ALL state DNR regulations still apply. There are no designated snowmobile routes or ATV/UTV routes on any roads in the town. ATVs and UTVs, golf carts, etc. are still NOT allowed to be operated on the roadways.

I maintain a social media presence for the town on Facebook, "Town of Erin, Wisconsin-Emergency Management," where I post any press releases, burning restrictions, road construction closures, and general reminders for residents.

We continue to deal with COVID-19. Because things have a tendency to change quickly, the Ozaukee/Washington Health Department's website maintains current information: www.washozwi.gov

(EM, Continued on page 3)



REPORTS

(EM, Continued from page 2)

FIRE/RESCUE SERVICE

Chief Tony Burgard of the Richfield Volunteer Fire Company provided a 2021 review to the Erin Town Board of the department and its calls for service in Erin. Chief Burgard also updated the town on the five-year staffing plan. His letter to residents is in this newsletter.

Richfield is one of three departments that serves the town, in addition to Ashippun Fire Department and Hartford Fire and Rescue. All three departments need members. Please contact them for more information. If you are unsure of your fire district, check the map on page 7.

BURNING

Please follow the burning ordinance. We had several complaints last year involving burning. Please be cognizant of conditions before you burn. It can be especially dangerous during the spring after the snow melts. In November 2020, there was a large grass fire off of Erin Road that necessitated the evacuation of some area homes. Fourteen fire departments responded to extinguish the fire.

Your fire **must be attended at all times**. You cannot burn during a burning ban. Do not burn if the wind speed is greater than 12 miles per hour. Violations can result in a citation from the town.

The rules for burning:

- No burning permits are required
- When fire danger is high, very high, or severe, all outdoor burning will be banned (this includes fireworks, which are already restricted by county ordinance) by order of the emergency management director or town chairman. Outdoor cooking, such as grills, is an exemption. In the event this is necessary, I will notify the sheriff's office and local radio stations. Notices will also be on the town posting boards and on the town website.

At any time of year:

- Open fires must be attended at all times
- The jurisdictional fire department, or preferably the Washington County Sheriff's Office, must be notified of any bonfire in excess of 10 feet in diameter or if a large area of grass is burned, generally more than one-quarter acre.
- Fires can't be started on the roadway surface; only leaves and grass can be burned in the right-of-way.
- The burning of garbage, plastics, rubber, treated wood, petroleum products or anything that emits noxious or toxic odors is **PROHIBITED**. The DNR already bans the burning of these items as they pose a health hazard to residents if burned.
- DNR regulations also prohibit businesses from disposing of solid waste by burning.

(EM, Continued on page 7)



1717 Highway 83 S
Hartford WI 53027
262-673-7001
chris@goemansrapidmart.com

OWNERS
CHRISTOPHER & LARRY
GOEMAN


NOW HIRING Sysco
Warehouse Positions,
Drivers and
Fleet Mechanics!
\$7,500
REFERRAL
BONUS AND
GREAT PAY!
LOCATION:
Eastern Wisconsin
APPLY TODAY! careers.sysco.com

**NEVER MISS
A NEWSLETTER!**

Sign up to have our newsletter
emailed to you at
www.mycommunityonline.com



Basilica and National Shrine of Mary Help of Christians



**HOLY HILL
GIFT SHOP**

Complete line of Catholic Bibles, Books,
Religious Gifts and Greeting Cards
for Adults & Children.
OPEN every day of the year
except Thanksgiving, Christmas and New Years.

WWW.HOLYHILL.COM
262-628-4735

**Thrive
Locally**



REPORTS

Roads Department by Road Commissioner and Town Supervisor Dan Coffey

Over the past few years, we've talked a lot about the condition of our town roads and what it will take to improve those conditions over time. This provides us a good opportunity to look back and ahead at these critical construction projects.

Looking back to last year's successful construction season is the stretch of Emerald Drive that was completed under budget. This was an important rebuild as Emerald Drive's conditions were deteriorating quickly.

Looking ahead to this year's project is our plan to rebuild St. Augustine Road from Hogsback to Elmwood Road, a project that's long overdue. A second project to rebuild Belfast Lane is also planned, but dependent on costs and available budget. Based on what we're hearing from our road contractors, road repair costs could climb by at least 10 percent this year. As with everything, higher prices and limited budget will determine how much we can do to improve our town road conditions.

We have also submitted a request to the Wisconsin Local Roads Improvement Program TRI-D for funds to help us rebuild the switchback on St. Augustine Road. If the request is accepted, we could see up to a 90 percent reimbursement for the \$219,000 project.

Your tax dollars contribute to our construction budget, but it's important you know how those funds stack up against our needs. If you look at the pie charts in this newsletter, you'll see roughly 13 percent – depending on your taxing district – of your property tax payment goes to the town of Erin. The largest portion of money for road repair comes out of the town's overall budget. Erin receives Wisconsin Department of Transportation Aid of approximately \$150,000 annually, which would rebuild about 2/3 of a mile of road per year. We also get a token amount of funding from the Local Road Improvement Project or LRIP, of about \$4,000 per year for road repair.

We have more than 56 miles of town roads to maintain. All major road repair is done by contractors. The requirements and scope of each year's road repair is advertised and granted to the lowest contractor bid, but it's still a considerable bite out of our budget each year. Despite being conscientious and deliberate with your tax dollars and the funds we receive from outside sources, our needs continue to outpace our financial resources.

Ash tree removal continues to strain the town budget.

We typically focus on roads with the most ash trees per mile to keep the cost-per-tree down. We removed 541 ash trees last year at a cost of \$72.46 per tree, totaling \$39,200.86. We have removed several thousand ash trees over the last few years with many more to go. We expect the cost of tree removal to rise in the future.

Snowplow drivers are essential this time of year to clean and salt our town roads. Our full-time road crew, Dave and Nick, are on call around the clock monitoring the weather, plowing and salting as needed. We have only two full-time road employees and some part-time plow drivers who do all the winter road maintenance. If you know anyone interested in plowing part-time who has the needed CDL licensing, please have them contact the town hall.

The lack of snow in December has helped hold down salt usage. Colder weather or weather above freezing often uses less salt. When the temperature cycles around freezing, we get icy conditions. Special care must be taken on hills and stretches of road where the sun is blocked by trees. Salt can't break down the ice unless the temperature allows it, leaving roads with icy spots.

Without a mechanic on staff, our road employees also spend time maintaining trucks and equipment. Dave and Nick manage most repairs with outside help called in as needed. Our snowplow trucks are 2001, 2005, and 2011. As you can imagine, dependability becomes an issue with the older trucks. Although the trucks are continuously cleaned, salt and age damage the chassis and the electrical wiring harnesses over time.

We are in the process of replacing our oldest plow truck. The current lead time for a finished plow truck package is spring of 2024. Yes, it takes two years or more to get a truck online. The truck chassis availability was projected to be April of 2023. Once we have the truck chassis, we can take it to the snowplow mounting company and wait another six months to a year to have plow and equipment mounted.

Erin Park by Maureen Fitzsimmons-Vanden Heuvel

Even though we are well into winter, our Erin-Go-Bragh Park is still being used. January saw some diehard disc golfers and, of course, whenever there is snow on our sledding hill, there are families enjoying the great outdoors.

Many thanks to our park liaison, Town Supervisor Seth

(Park, Continued on page 5)



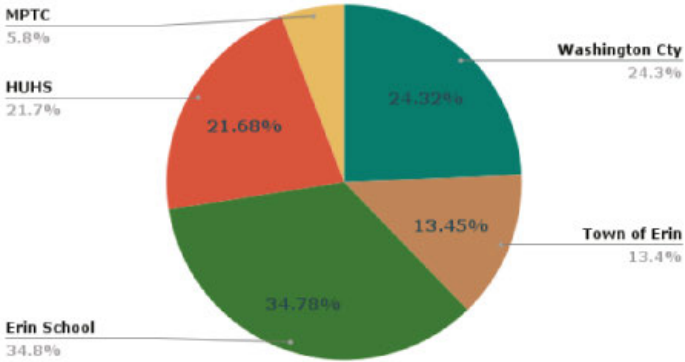
REPORTS/COMMUNITY NEWS

Where are my property tax dollars?

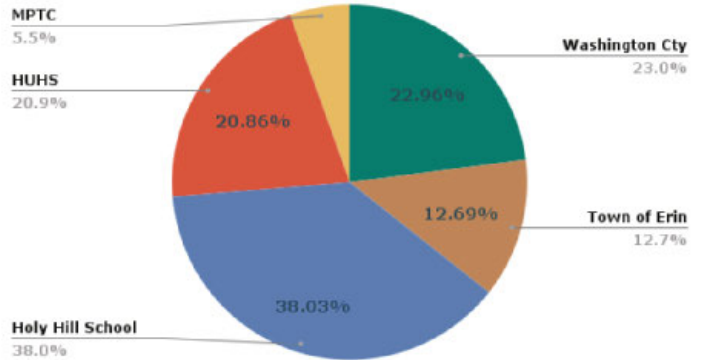
By Maripat Blankenheim

When you pay your property taxes to the Town of Erin, the town is collecting money for all the taxing districts, including the school districts and Washington County, as well as the town. Other than Moraine Park Technical College, the Town of Erin is the smallest piece of your tax dollar pie. While the percentages may fluctuate slightly from year to year, the pie pieces are fairly consistent.

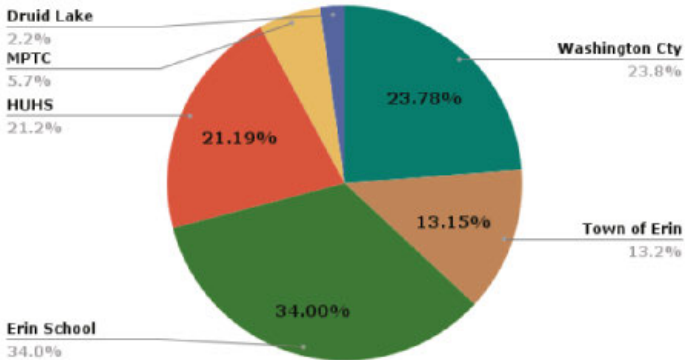
Erin School District 2021



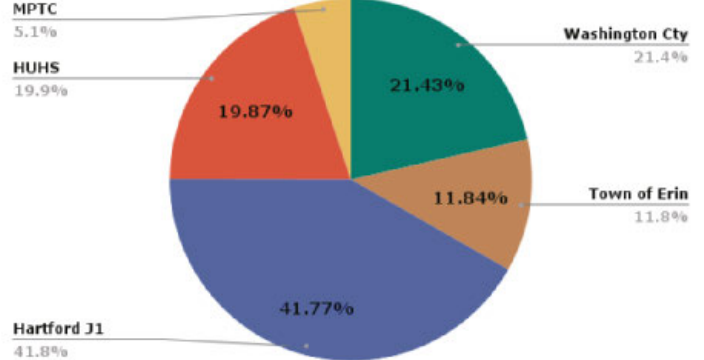
Holy Hill School District 2021



Erin School District with Druid Lake 2021



Hartford J1 School District 2021



(Park, Continued from page 4)

Dornfeld, who built the forms and oversaw the concrete pouring for the foundation for our new – coming soon – town of Erin weather resistant sign. We're also grateful to Dave Lofy and Nick Savatski for their help in digging the foundation. The new sign should be in place by our next newsletter.

We are also working to add three more holes this year to our 12-hole disc golf course. Our new disc golf sign was installed in October with a great app for golfers to use in navigating our ever-expanding course. For our disc golf enthusiasts, tax-deductible donations are always welcome. No donation is too small. Donations can be sent to Town of Erin, 1846 State Hwy 83, Hartford, WI 53027 and note on your check: Disc Golf Park Improvements. Tree donations to honor a loved one are always appreciated. Contact Town Clerk Julie Kriewaldt at clerk@erintownship.com for information on how to donate a tree.

Erin Hills

by John Morrissett



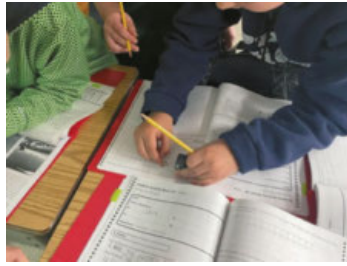
The 2022 season at Erin Hills

The upcoming golf season promises to be an exciting one at Erin Hills. The Erin Hills MACC Fund Invitational, a large high school tournament that typically raises more than \$75,000 for Midwest Athletes Against Childhood Cancer, is April 30. The course will open for the season on May 6.



SCHOOL NEWS

Erin School once again performs well on the Wisconsin state report card. Working through the pandemic, we are proud of being responsive to student needs and moving learning forward. Our state report card ranked us as first in our county and among the top in our CESA. While standardized test scores are only one piece of the learning puzzle, we are proud of our teacher and student efforts!



6th and 7th grade Christmas concerts at the Schauer Center



In a time-honored Erin School tradition, the eighth graders performed their Christmas musical; Lights! Camera! Christmas!



Third graders set resolutions for academic learning, create treehouse book clubs in reading, and learn about the force of magnetism in science.



Braving the negative wind-chills, Erin's eighth grade classics reading group succeeded in starting their own fire in the cold, re-enacting Jack London's tale of survival in "To Build a Fire."

Third grade holiday book exchange



Second grade holiday fun.

(School, Continued on page 7)



SCHOOL/COMMUNITY NEWS

(School, Continued from page 6)

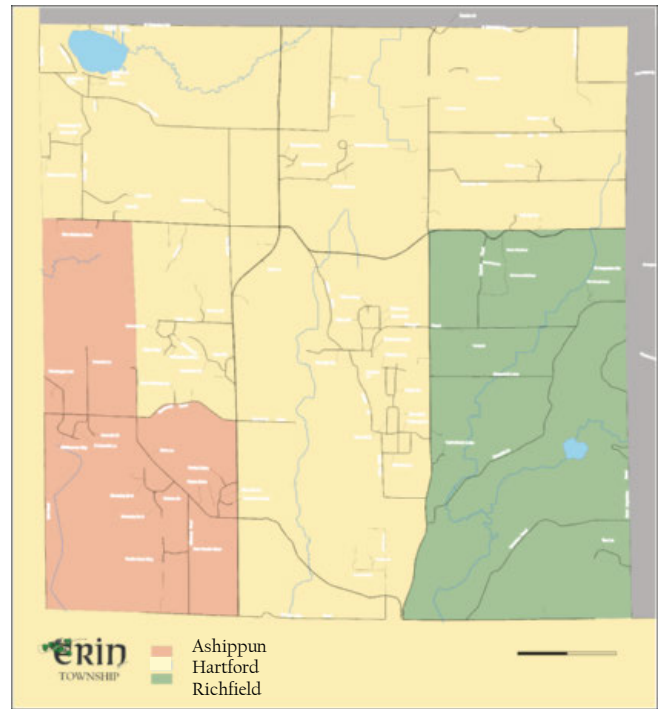


Second graders dressed their best for our holiday performance.



(EM, Continued from page 3)

TOWN OF ERIN FIRE DISTRICTS



(EM, Continued on page 8)



ERIN  HILLS

ERIN HILLS THANKS THE TOWN AND
THE RESIDENTS FOR THEIR SUPPORT.

866-772-4769 • Erin, Wisconsin • www.erin hills.com



For ad info. call 1-800-950-9952 • www.lpicomunities.com

Town of Erin, Hartford, WI

B 4C 01-1385

COMMUNITY NEWS

(EM, Continued from page 7)

Richfield Volunteer Fire Department Letter by Tony Burgard Fire Chief

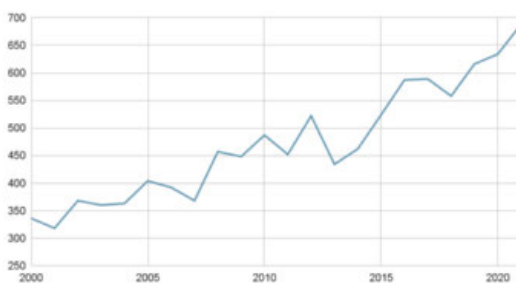
I'd like to take a moment of your time to update the community on the status of the Richfield Volunteer Fire Company. The RVFC is a private company and currently contracts its services to the entire Village of Richfield, the entire Town of Germantown, 8 square miles in the Town of Erin, and 3 square miles in the Town of Polk. We operate as a "combination department," which means that we operate with both paid and volunteer staff, and rely heavily upon the majority of the membership as volunteers (also called paid-on-call or POC's). Station #2 is staffed with personnel during weekdays Monday through Friday, from 8a.m. until 6p.m. Our volunteers respond to any emergency occurring outside of these hours. To do so outside of staffed hours, at the time of alarm, members drive from their homes to the fire station, gather in the appropriate piece of emergency apparatus, and respond to the emergency incident.

As 2021 came to a close, we finished our busiest year in the history of the fire company. Responses were broken down into 141 fire calls and 548 EMS calls, totaling 689 calls for service. This resulted in an increase of 55 calls over 2021's incident total of 634 calls for service. The chart below shows the trend of calls over the past 20 years, with the RVFC more than doubling our call volume in that 20 year time period. This is consistent, if not slightly behind, both recent State and National trends in the emergency services world where call volumes continue to grow annually.

The membership of the RVFC, however, has seen the opposite trend. The chart below shows that at the end of 2021 the total amount of active volunteer members were 33 people, which is less than half of membership in 2012 at 76 people. Why the constant decline in volunteers? There is no one singular answer, but there are a few recurring themes. Our membership decline aligns with National trends where volunteer members are decreasing at an ever-increasing rate. The population of Richfield has made a transition from the

early farming community to the subdivisions with families commuting to and from local metropolitan business areas. The lack of rental or other non-single-family homes provides a difficult situation for those who are looking to move out of their parent's homes. Not to mention the current cost of a home in our area is well in excess of \$300,000 making finding a starter home in the area very difficult. Perhaps most importantly are the schedules of the average household including family life, sporting activities, work requirements, and other social engagements, all allowing for less time to be dedicat-

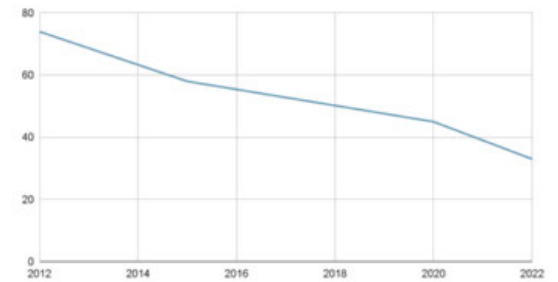
20 Year Call Trend



ed to volunteering. This life schedule is something that also affects the availability of time that our current volunteers have as well.

To help combat the increasing call volume and declining membership, the 2022 budget allowed for making a change in staffing models. An additional employee was hired full-time, for a total of five full-time employees. Three of these employees, who are trained to the paramedic level of EMS care, were then moved to a 24-hour rotating shift. As of January 1st, 2022 one of these three employees is in the fire station at all times. This will allow for greatly reduced re-

Number of POC's



sponse times where a trained paramedic is going enroute to a medical emergency immediately from the station at the time of dispatch notifying us. During weekday daytime hours two additional paid employees will respond with the ambulance at the station. For calls occurring on nights and weekends, two volunteers will be responding to the scene to create an ambulance crew.

This is a huge step forward, one that can help support the growing needs of our communities and our volunteer membership. Future steps will need to be taken to ensure that this staffing model is able to support the needs of the coming years. A five-year plan has been developed to ensure that staffing levels are met and to help distribute the call volume among the volunteer members. This involves hiring an additional employee each year for the next five years. One full-time employee is needed to work the weekday daytime position to build staffing levels back up to pre-2022 staffing levels. Three additional employees are needed to work the rotating 24-hour schedules so that two full-time employees are at the station around the clock, which only requires one volunteer for most first out EMS calls on nights and weekends. And finally, one full-time equivalent employee is needed to cover vacation and sick time on the rotating 24-hour shift.

But we need your help to achieve this plan. First, we always need volunteers. If you have ever considered helping out your neighbors in time of need, please contact the fire station to learn more about how you can volunteer with the fire company. We pay for all training and equipment needed to obtain State of Wisconsin certifications in fire or EMS, and also pay hourly while these members are on an emergency incident. Secondly, the increases of this five-year plan may exceed tax levy limits of the municipalities, and a referendum may be needed if budgets are not able to support the needs of the fire company. With your help, we can achieve our goals to support the longevity of our volunteer members, provide the best opportunity for those to volunteer in their community, and provide the best and fastest emergency services that we can with the combination of paid and volunteer staff.



COMMUNITY NEWS

Schauer Arts Center

The Beat Goes on at the Schauer Arts Center in 2022



The Schauer Arts Center continues to present its 2021-22 Performing Arts Series. Performances include Church Basement Ladies, B2WINS, Skerryvore, two sold-out shows for Charlie Berens and more.

Upcoming Winter/Spring performances include:

- **Church Basement Ladies 20th Anniversary National Tour!**, on Saturday, March 5, at 3 and 7:30 p.m.
- **B2WINS The Original Violin & Ukulele Brazilian Twins**, on Friday, March 11, at 7:30 p.m.
- **Skerryvore Scottish Celtic Rock Group**, on Friday, March 18, at 7:30 p.m.
- **Mark Nizer 4D The Only Live 4D Show in this World**, on Friday, March 25, at 7 p.m.
- **Charlie Berens Midwest Survival Guide Tour**, on Saturday, March 26, at 3 and 7:30 p.m. **SOLD OUT**
- **Rockapella, Original Vocal Music & A Cappella Covers of**

Pop & Rock, on Saturday, April 2, at 7:30 p.m.

- **That Golden Girls Show!, A Puppet Parody**, on Saturday, April 9, at 3 and 7:30 p.m.
- **Riders in the Sky, American Western Music & Comedy Group**, on Friday, April 29, at 2 and 7:30 p.m.
- **The Whiskeybelles, Roots Country**, on Friday, May 6, at 8 p.m.

The Schauer School of the Arts (SSA) is accepting registration for its Thursday Adult Wine & Art classes and Monday Adult Happy Dance Hour classes.

To purchase tickets or register for classes, stop by the Schauer Center Box Office Monday through Friday from noon to 5 p.m. at 147 N. Rural St in Hartford. You can also order by phone at 262.670.0560, ext. 3 or online at SchauerCenter.org.

Arts Immersion

Multi-Arts Opportunities for Schools and Community Groups

Step into the Schauer Arts Center for an interactive day of multi-disciplinary arts education workshops. Featuring

(Schauer, Continued on page 10)

JASON R. BONESTEEL
CELL 262.719.0132
OFFICE 262.381.1056
EMAIL
JBONESTEEL@SHOREWEST.COM
WEB
JASONRBONESTEEL.SHOREWEST.COM

YOUR NEIGHBOR AND
REAL ESTATE AGENT IN ERIN.

JIMMY JOHN'S
Since 1983
GOURMET SANDWICHES

1540 E. Sumner St. • Hartford
WE DELIVER! 262-670-0555

AVAILABLE FOR A LIMITED TIME!
ADVERTISE HERE NOW!

Contact **Jeff Parkinson** to place an ad today!
jparkinson@lpicommunities.com
or (800) 950-9952 x5887

support our
ADVERTISERS



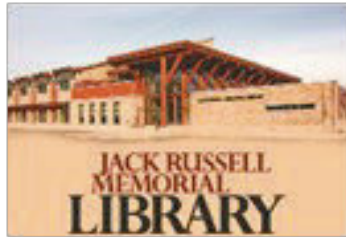
COMMUNITY NEWS

(Schauer, Continued from page 9)

dance, music, theater, and visual arts experiences; Arts Immersion Days are tailor-made to your school, group, or organization needs. Public schools, private schools, homeschool groups, scouting groups, youth and adult programs, and accelerated learning programs are all encouraged to customize an Arts Immersion Day. Visit https://www.schauercenter.org/school_of_the_arts/arts_immersion/ to learn more.

Jack Russell Memorial Library

Jack Russell Memorial Library (JRML) is open for in-person services and contactless pickup of materials. Please visit to browse for materials, pick up holds, use a small meeting room and for computer or internet access. Please call us at 262.673.8240. To schedule contactless hold pickup, please visit: <https://bit.ly/3JY5mH8>.



Library hours

Monday – Thursday 9 a.m.-8 p.m.
Friday 9 a.m.-5:30 p.m.
Saturday 9 a.m.-2 p.m.

For citizens who need to print or scan documents, please visit the reference desk on the second floor for help. We're able to scan documents to a jump drive as well as scan and email documents to your personal email address at no cost. Photocopying and faxing service is available at the circulation desk during regular hours for a minimal fee.

Looking for federal and/or state tax forms? The library will have 2021 forms available in February. Please call to check availability.

Crafts for Grownups returns in 2022. Kits release on the first Monday at 6 p.m. and the second Wednesday at 10 a.m.



**Crafts for Grown-ups
On the Go Kits
February - May 2022**

Mondays at 6pm

February 7 DIY Valentine Gnome	March 7 Irish Soda Bread (regular & gluten free)
April 4 Clothespin Carrot	May 2 DIY Toilet Paper Wreath

Wednesdays at 10am

February 16 Ribbon Bookmark	March 16 Book Page Bunny
April 20 Bottle Cap Flowers	May 18 French Flower Pot

Projects may change without notice due to availability of supplies
Limit: 2 kits per person | first come, first serve

Instructions for all kits are available at <https://www.hartfordlibrary.org/>

JRML's very popular kits for kids and teens will be available each month in addition to all in-person programs available. Craft kits for kids ages 2-11 are available for pickup the first Wednesday of each month. On the first Thursday of each month, teens can stop in for their own kits. Please look for kits near the entrance of the library at 3:30 p.m. Kits are available on a first-come, first-serve basis.

Crafts for Grownups continues twice per month on the first Monday at 6 p.m. and the second Wednesday at 10 a.m. Kits are available on a first-come, first-serve basis. After kits are released, instructions can be found at https://hartfordlibrary.org/crafts_for_grownups_kits.aspx.

It's Oscar Season with Movies for Grownups. Please visit <https://www.hartfordlibrary.org> for a complete list of titles, dates and times.

Our adult book discussion group meets on the second Monday of the month at 6:30 p.m. Books are available at the circulation desk a month before for pickup. No sign-up required. Can't make it but interested in what the group is reading? Please visit our website for a complete list: https://www.hartfordlibrary.org/adult_book_discussion_group.aspx.

ADULT BOOK DISCUSSION GROUP

Meets on the second Monday of the month at 6:30pm in the Community Room

February In an Instant
by Suzanne Redfearn

March Sweetness of Water
by Nathan Harris

April The Premonition: A Pandemic Story
by Michael Lewis

Copies available at the circulation one month ahead; sign-up not required; copies can also be requested through the Monarch online catalog at monarchlibraries.org or give us a call!

Join us in the Youth Services Department for weekly activities for kids 18 and under. The following do not require sign-up.

- Lego Club – First Tuesday of the month at 3:30 p.m. Best suited for ages 3 and up.
- Boredom Buster Bags To Go – First Wednesday of the month at 3:30 p.m. For ages 2-11.
- STEAM Club – Second Tuesday of the month at 3:30 p.m.. Best suited for ages 5 to 11.
- Teen Take and Make Kits – Second Thursday of the month at 3:30 p.m. For ages 12-18

For information on our weekly story time program, please visit: <https://www.hartfordlibrary.org/children.aspx>.



COMMUNITY NEWS

St. Patrick Preservation, by Maureen Fitzsimmons-Vanden Heuvel

We are pleased to announce the inclusion of St. Patrick's Church in "Pioneer Churches of Wisconsin," a new book by Michael J. Cooney. All across Wisconsin, there are small, carefully preserved churches, which were built by the first immigrants to the state and maintained by dedicated individuals, families, historical societies and cemetery associations, who have a long history with the building. The book details the history of 113 of these unique churches with strong immigrant roots. To buy a copy of this wonderful historic book, contact Michael Cooney at Heritage Wisconsin, LLC, 5391 County Road K, Oshkosh 54904, 920.379.5556 or mjcooney5391@gmail.com

We also acknowledge the passing of one of our dear supporters and attendee (along with her brother, Tom) at many of our Annual St. Patrick's Day Masses at St. Patrick's Church in Erin—Eileen Mary Byrne, Jr. Eileen was a 39-year Special Education Teacher in Chicago, where she worked as a Deaf and Hard of Hearing Itinerant Teacher. Eileen's very special Committal Service took place at New St. Patrick's Cemetery on Aug. 6, 2021. A beautiful

procession from St. Patrick's Church to the cemetery was led by Bagpiper Rob McWilliams. Celtic Harpist Kim Robertson played her heavenly music while Cantor Steve Tenenies' singing brought tears to our eyes. Father Britto Suresh, pastor of St. Kilian's Parish gave a moving reflection.

Several Byrne family members are now buried at St. Patrick's --so fitting since they are descendants of the Barnett and O'Connell families.

Grandparents Daniel and Isabella (McWilliams) O'Connell are buried in Old St. Patrick Cemetery. Great-grandparents Patrick and Ellen (Barnett) O'Connell were previous owners of the Saloon & General Store also known now as the Tally Ho. Her great-great grandparents were Daniel and Hanora (Donahue) O'Connell who were listed in the 1855 Erin census. Godspeed Eileen.



Hang where the locals do
A PROUD LOCAL TRADITION SINCE 1982
RICHFIELD, WISCONSIN

SUPPORT OUR ADVERTISERS!

Steve & Shirley Jost, Owners
Longtime Erin Residents
262-673-5280
696 S. Grand Ave.
Hartford, WI 53027

WE'RE HIRING
AD SALES EXECUTIVES
BE YOURSELF. BRING YOUR PASSION. WORK WITH PURPOSE.

- Work-Life Balance
- Full-Time with Benefits
- Serve Your Community
- Paid Training
- Some Travel

Contact us at: careers@4lpi.com | www.4lpi.com/careers

AVAILABLE FOR A LIMITED TIME!
ADVERTISE HERE NOW!

Contact **Jeff Parkinson** to place an ad today!
jparkinson@lpicomunities.com
 or (800) 950-9952 x5887

COMMUNITY NEWS

Erin Soccer by Ashley Lisocki, Secretary



Erin's Annual Leah Fenney Tournament was held in October. It would not have been possible without the support of club families, the community, and local businesses. Thank you for all that you have done! We'd also like to thank the town of Erin and staff for their assistance and for allowing us to use the park. We are always looking for individuals and businesses to help make our tournament successful. Please reach out if you are interested.

If you have a child interested in playing soccer in spring, watch our website and follow us on our Facebook Page for updates. Spring registration is open February through March. We have teams for children in 4k & 5k (U6) through 8th grade (U14). Practices are held one to two times a week at Erin Town Hall, and most games are played on Saturday. We are a recreational club and part of the Kettle Moraine Soccer League (KMSL). Come join us for fun, fitness and fair play.

Would you or someone you know like to be a referee? This opportunity is great to help the kids learn, while making a little extra money. Please contact us for more information. Most games are Saturday mornings.

Erin Soccer Club contact information:
Website: erinsoccer.org
Email: erinsoccerclub@gmail.com
Facebook: Erin Soccer Club

Erin Youth Baseball Club by Andy Bath

The future of our baseball program is bright due to dedicated parents, sponsors, and our supportive community. For years our program has introduced baseball, possibly one of the most perfect games created, to many children. Under the leadership of Kevin and Fran Kerrigan, we have earned the respect of neighboring communities as a competitive and well-run organization.



With the passing of time comes change, from which our program is not immune. Some changes are taking place, such as the adoption of a new nickname – The Erin Rangers, new website, more training opportunities, and a new

foundation of strong leaders. This seamless transition will position our community's baseball program extremely well for years to come.

Our baseball season runs from mid-May through mid-July. Home games are played at Erin Go-Bragh Park weekday evenings. The baseball club is grateful for the use of this wonderful venue and for the people who keep it in beautiful condition.

Lastly, thanks to our sponsors and volunteers for making it possible for us to provide the environment that will help us create lasting memories and invaluable life skills for our players, families, and community. If you have a child or know a child who is interested in playing for the Erin Youth Baseball Club, please visit our website or contact us directly.

Erin Youth Baseball Club Contact Information:
Website: www.erinrangers.com
Email: erinbaseballclub@gmail.com
Facebook: [erinbaseball](https://www.facebook.com/erinbaseball)

42th Annual St. Patrick's Day Parade by Derek Wilcox, St. Patrick's Day Parade Committee Chairman

The St. Patrick's Day Parade is fast approaching, scheduled for Thursday, March 17, at 11 a.m.

Prize money will be awarded to the best entrants in each of the three categories: Best Antique, Best Animal, and the all-inclusive Judge's Choice. All participants MUST complete an entry form. No unregistered walk-ins are permitted. Parade entrants are limited to the first 50 to register. Entry forms are at Erin Town Hall, 1846 Hwy 83, Hartford, 262.673.3682, at www.erintownship.com or at Erin Inn – Irish Pub.

As always, a King and Queen of the Parade will be crowned. To be eligible, you must be 21 years old and not married. If multiple people are interested, there will be voting at local establishments. The Coronation Ceremony is Sunday, March 13, at Erin Inn. If interested in becoming the next King or Queen, please contact Derek at Erin Inn.

The parade is only possible with the help of numerous volunteers and donations from individuals and businesses. If you or someone you know is willing to volunteer or provide a donation, please contact Derek at Erin Inn.



COMMUNITY NEWS

Washington County Humane Society

Humane Society offers coyote tips

Dating back to ancient times, coyotes have been considered menaces to farmlands and livestock owners. They've been known to burrow in crops, scare cows right out of the pasture, and even attack family pets.

Fast forward to the present day and not much has changed. Packs often venture into residential areas and can cause real fear. The natural response for most is to trap or hunt them, but this does not solve the problem. Trapping may need to be repeated several times and killing a coyote will only inspire the pack to reproduce and increase their numbers. Additionally, leaving a vacuum in what is normally the pack's territory could invite other wildlife to move in.

Here are a few humane tips shared by the Humane Society of the United States that local landowners can use to help control the population and protect their property:



1. **Haze them.** Most coyotes will avoid people, but if they have been fed, they likely won't show any fear and will continue to trespass. Hazing is simply acting tall, loud and threatening when they come around. If this is not an option, using a noisemaker (such as stones in a can) also works well. This is a harmless way to remind them that there are boundaries that need to be respected. Repeat this often and they will get the idea.
2. **Protect pets and secure food sources.** A pack may confuse a pet dog or cat for prey and attack. Make sure indoor cats are kept indoors and small dogs are leashed and monitored when outside. Even medium-large dogs should be kept close-by, under a watchful eye.

Feeding your pets inside erases the threat of an attack and removes an incentive for coyotes to be bold. Livestock feed should also be secured in animal-proof containers to keep out coyotes and other wildlife.

Using non-lethal methods ensure that coyote populations stay regulated and your property stays protected. Living harmoniously with wildlife is something Wisconsin does best. While we may not be wildlife experts, we have plenty of information and resources on local fauna, so give our shelter a call at 262.677.4388.

Wondering What Your HOME IS WORTH?



Contact me for an in-depth evaluation of your home for FREE!
It's a great time to buy or sell and I am here to help!

Dana Osmanski
608-235-9696



FIRSTWEBER
REALTORS®
a Berkshire Hathaway affiliate



Thrive Locally

ADT-Monitored Home Security

Get 24-Hour Protection From a Name You Can Trust

- Burglary
- Flood Detection
- Fire Safety
- Carbon Monoxide



ADT Authorized Provider **SafeStreets** 1-855-225-4251

4 Great Businesses Under One Roof!

1333B State Rd 175, Hubertus • 262-628-4771
www.nutman.com • info@nutman.com
Monday thru Friday 7am-7pm • Saturday 8am-5pm • Sunday 8am-3pm

Java Dancer
COFFEE BAR & CAFÉ



Espresso, Lattes, Cappuccino, Coffee, Smoothies, Bakery, Snacks, Sandwiches, Soup, Salad, and Pizza

THE Nutman COMPANY
U S A , I N C .

Hubertus, WI 53033 (262) 628-4771
Over 200 varieties of nuts, chocolates, snack mixes, candy & gourmet foods!

Joyful Dance Movement, Yoga, and Jazzercise

Call Jill (262) 628-4771,
Kitty (414) 232-1448 or
Stefanie (262) 893-8620
for more information.

THE Really Cool
GIFT SHOP



262-628-4771 Hubertus, WI
Jewelry, candles, purses, books, chimes, cards, scarves, giftware & more!

We have moved!
Come see us at our new location!



COMMUNITY NEWS

St. Mary of the Hill Parish by

Vicki Dubnika 1515 Carmel Rd. Hubertus

Refresh, Revive, Renew

Good news! We've turned the corner toward spring, which officially begins March 20. It is time to look forward to the good things to come. Some of us are alone and feeling down. Some of us are worn out by the grind of day-to-day demands. Connecting with a community and focusing on what's most important is essential. St. Mary of the Hill Parish offers many opportunities to refresh, renew, and revive.



Helping Hands

Could you use another pair of hands to do some light cleaning, prepare or cook meals, or make a run to the grocery store or doctor's office? Could you spare some extra time for those in need? St. Mary of the Hill's Human Concerns Committee is pairing parish volunteers with parishioners in need. Call the parish office at 262.628.3606 to request assistance or to volunteer.

Eucharistic Adoration

Wednesdays from noon to 6 p.m.
Spend time before the Blessed Sacrament and celebrate Mass at 6 p.m. This is a peaceful, prayerful opportunity to be in the presence of the Lord.

1 Percent Prayer Challenge

One percent of a 24-hour day is about 15 minutes. Why not dedicate 1 percent of your day to prayer? Never mind New Year's. It's never too late to set goals and achieve them. Try the 1 Percent Prayer Challenge for 30 days for a deeper encounter with Christ.

Frassati Youth Group

Attention all youth grades 6-12. Did you make a New Year's resolution to try something new, be kind to yourself, or to make 2022 a year filled with amazing memories? Join the St. Mary of the Hill Youth Group for a time of faith and fellowship on Saturday, Jan. 22, and Saturday, Feb. 26, from 5:30-7:30 p.m. Sledding at Glacier Hills Park is planned for January, and the February youth group is game night. Contact Youth Minister Grace Marie Urlakis at ym@stmaryhh.org or by calling 262.628-3606 x4 for more details.

Lifelong Learning/Family Faith Formation

Worshipping vs. Honoring
On Feb. 6, join Brother Joseph-Teresa as he shares the critical difference between these distinct faith-based actions. Learn what Catholics really believe and practice. This is part of the Lifelong Learning/Family Faith Formation presentations taking place 11 a.m. to noon.

The Teachings of Lourdes

Did you know St. Valentine's Day isn't the only significant day in February? Feb. 11 is the feast day of Our Lady of Lourdes as

well as a World Day of Prayer for the Sick. Learn about the miracles that have taken place since Our Lady of Lourdes appeared to St. Bernadette in a quaint town in Southern France more than 150 years ago. Fr. Jude Peters shares his knowledge and experience on this topic on Feb. 13 from 11 a.m. to noon as part of the Lifelong Learning/Family Faith Formation presentations.

Family Focus Sunday

Join Faith Formation families in family adoration on Feb. 27 following the 9:30 a.m. Mass. Learn about what Adoration is and what to do when you are in Adoration. On March 20, join us for Bible Jeopardy at 11 a.m.

St. Dymphna Group

Mondays, Feb. 7 and 21 at 1 p.m.
Share healing and strength through this Catholic mental health and spiritual group for people with mental illness who also have problems with addiction.

Book Club

The final of three book club sessions focused on Fr. Jacques Phillippe's "Searching For and Maintaining Peace: A Small Treatise on Peace of Heart" is Thursday, Feb. 10, from 9-10:30 a.m. Come hear what this book offers and learn what book the group might explore next.

Lenten Season

Lent is a time for renewal. The season begins March 2 with Ash Wednesday and concludes roughly 40 days later on Holy Thursday. Join St. Mary of the Hill Parish and find a variety of ways to prepare for the Easter celebration through reflective prayer, almsgiving, and sacrifice.

St. Mary of the Hill's Human Concerns Committee organizes various outreach activities to support those in need. Monetary gifts from these endeavors have been donated to Cross Catholic Outreach, which helps with disaster relief in the United States as well as Saint Bakhita Catholic Worker Home, a new facility in Milwaukee working to help women affected by human trafficking. Several other charities have benefited from the Human Concerns Committee's efforts. Consider joining their efforts – a fantastic way to live one's faith.

Connect with St. Mary of the Hill

As spring nears, we look forward to seeing you at St. Mary of the Hill. Learn more by visiting <https://stmaryhh.org/>. Take a leisurely drive to 1515 Carmel Road in Hubertus or call 262.673.7505. Find St. Mary of the Hill Parish on Facebook at <https://www.facebook.com/stmaryhhyouthministry/>

Unable to attend Mass due to Covid? Visit <https://stmaryhh.org/>, click Live Stream Sunday Mass at 9:30 under the Mass Info tab. Did you miss previous presentations and really want to know what the Catholic Church teaches? Visit <https://stmaryhh.org/>. Click on Events and scroll down to Lifelong Learning Presentations and click the link. Once on the YouTube page, click Videos to see past informational talks.



COMMUNITY NEWS

St. Paul's United Church of Christ-Erin

495 St. Augustine Rd., Colgate, WI
(corner of St. Augustine and Monches Rds.)

www.stpaulserin.org
262-628-2319

Chili Dinner – Dine in or To-Go
Sunday, Feb. 27 – 11 a.m. to 2 p.m.
Dine-in includes bottomless bowl of tasty chili, cornbread, coffee/milk and delicious homemade dessert. To-go chili available (16oz serving with sides)
Hot dogs also for sale.
Adults - \$9 Kids - \$6

Handicap entrance off upper parking lot on southwest side of church

-Please check website for any updates-



Notice to Town of Erin Veterans



If you or anyone you know want a name enrolled on the Erin Veterans' Memorial Monument, please contact one of the committee members: Patrick Hansen, 262-966-0837; Jeffrey Millikin, 262-673-3682; Franklin Tennies, 262-673-2723; or Michael Eggleston, 414-651-0875.

To be eligible, you must be a resident or former resident of the Town of Erin and have a copy of DD-214, Honorable Discharge, or deployment orders by the federal government documenting your military history.



Habitat for Humanity
Germantown ReStore

Shop. Donate. Volunteer.

Washington and Dodge Counties
Habitat for Humanity

ReStore
262-255-7470
www.hfhrestore.org

Hours:
Monday-Friday: 9am-6pm
Donations from 9am-5pm
Saturday 9am-4pm
Donations from 9am-3am

W190N10768 Commerce Circle
Germantown, WI 53022

SUPPORT OUR
ADVERTISERS!

**Hahn's Water Well
Pump Service, Inc.**

262-670-6800
COMPLETE WELL SYSTEM SERVICE
HahnsWellService.com

FREE AD DESIGN
WITH PURCHASE OF THIS SPACE

CALL 800.950.9952

ADVANCE
LAWN SERVICE COMPANY, LLC

- LAWN CARE
- LANDSCAPING
- SNOW REMOVAL
- SUPPLIES

262.623.2207 COMMERCIAL
RESIDENTIAL

1859 WI-83 · Hartford, Wisconsin 53027
www.AdvanceLawnService.com

**ADT-Monitored
Home Security**

Get 24-Hour Protection
From a Name You Can Trust

- Burglary
- Flood Detection
- Fire Safety
- Carbon Monoxide

Authorized Provider | SafeStreets | 1-855-225-4251



1846 State Hwy. 83
Hartford, WI 53027

PRSRT STD
US POSTAGE
PAID
NEW BERLIN, WI
PERMIT NO. 188

IMPORTANT PHONE NUMBERS

Police Emergency.....911
Washington County Sheriff262-335-4378
Fire Emergency.....911
Ashippun Fire920-474-4223
Hartford Fire 262-673-8290
Richfield Fire 262-628-1601

ERIN TOWNSHIP

Phone: 262-673-3682
www.erintownship.com

Scheduled Meetings:
Town Board-7 p.m. third Monday each month
Plan Commission -7 p.m. first Monday each month
Meetings held unless holidays or other
conflicts arise
For complete listing, see the website

CONTACT INFORMATION

TOWN BOARD MEMBERS

Dennis Kenealy, Chair 262-673-3682
chairman@erintownship.com
Jeff Millikin 262-966-7204
Dan Coffey 262-673-5840
supervisor2@erintownship.com
Maripat Blankenheim 262-673-2505
supervisor3@erintownship.com
Seth Dornfeld
supervisor4@erintownship.com

TOWN CLERK

Julie Kriewaldt 262-673-3682
clerk@erintownship.com
Mon-Thurs 8 a.m.-4 p.m.

TOWN TREASURER

Marjorie Bruha 262-673-3682
treasurer@erintownship.com

HIGHWAY DEPARTMENT

Road Contact: 262-673-3702
Tree Emergencies: 414-750-9529

ASSESSOR

Michael Grota
Office: 262-253-1142

ZONING OFFICE

Jenny Conley: 262-673-3682
zoning@erintownship.com
Tues/Thurs 9 a.m.-3 p.m.

BUILDING INSPECTOR

Rob Froh: 920-382-6202
Tues/Thurs 2-3 p.m.